

# Continuous Pug Mixer

The LCI Pug Mixer features twin counter rotating shafts equipped with specially designed paddles. This high efficiency dispersive mixer evenly distributes liquids into powders, making it ideal for continuous downstream processes that require a consistent moisture levels.

Dry powder is introduced into the Pug Mixer at a constant rate. Liquid is added to the moving dry powder through a drip bar or spray nozzle. Liquid and powder are intimately mixed by special mixing paddles on each shaft, producing an extrudable wet mass. The twin shafts rotate outward (or inward if required), transporting material along the barrel toward the discharge.

The LCI Pug Mixer is constructed of stainless steel and equipped with a variable speed drive.

The Pug Mixer's rugged industrial design coupled with the described features, make this device ideal for wet granulation processes and provide years of trouble-free operation.

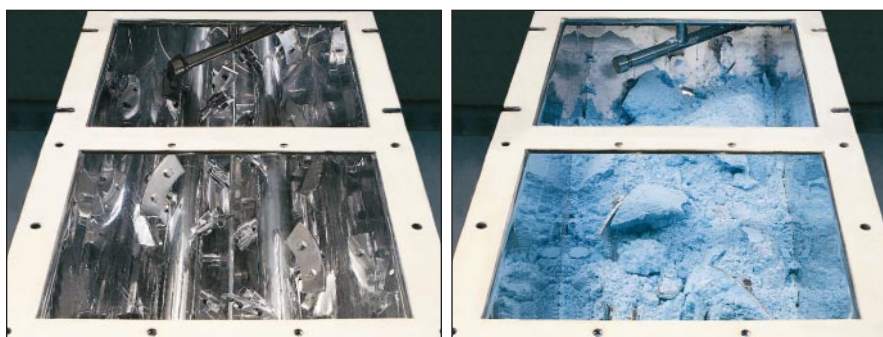
## Options

- Explosion proof electricals
- Heating/cooling jacket
- Alternate frame layout
- Alternate drive layout
- Multiple liquid addition arrangements
- Sacrificial liner
- Bolted or clamped inspection covers

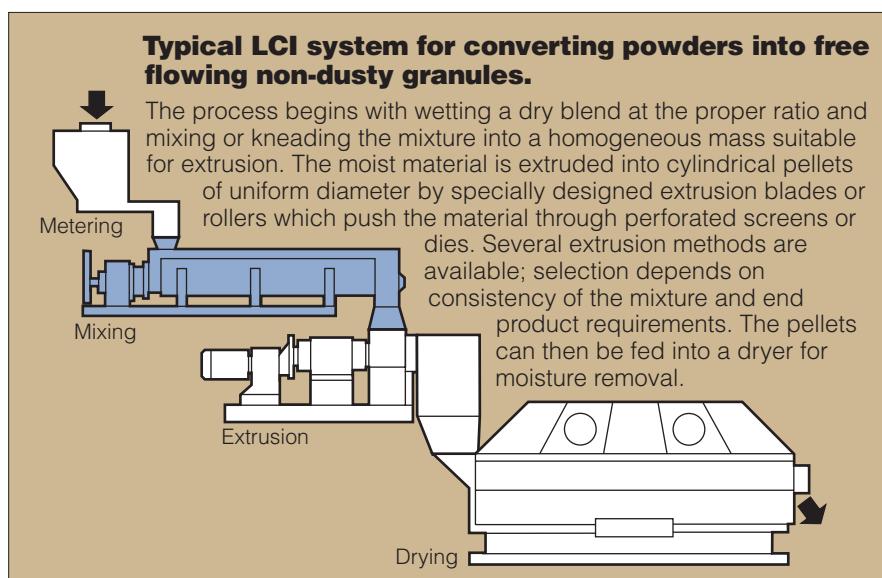
*Specifications overleaf*



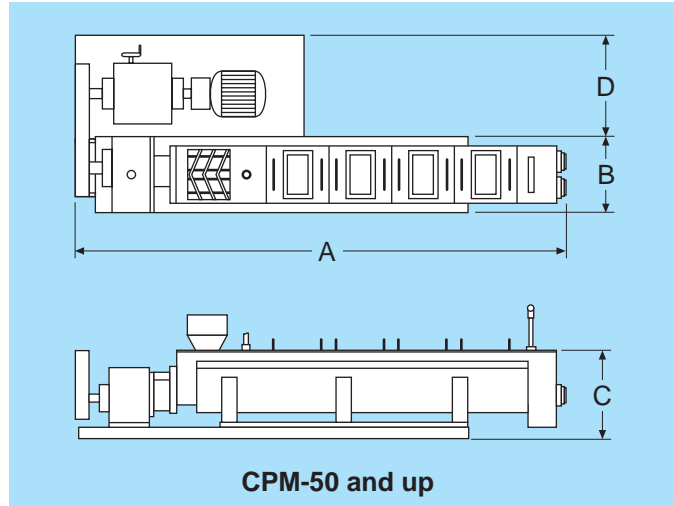
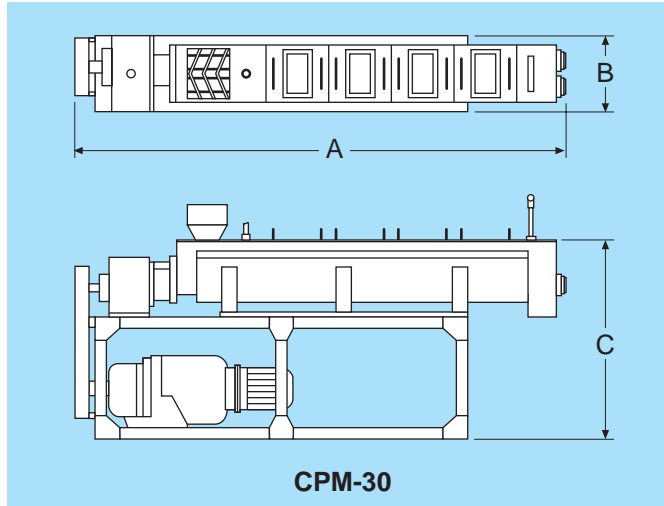
The LCI Pug Mixer provides a homogeneous mix of liquids and powders



Twin shafts with special blades thoroughly mix powders and liquids



## Pug Mixer Specifications



Model	Motor hp	Capacity liter(gal.)/hr	Dimensions				Weight kg(lb.)
			A mm(in.)	B mm(in.)	C mm(in.)	D mm(in.)	
CPM-30	3	80–400(20–105)	1,710(67)	440(17)	1,245(49)	—	770(1,700)
CPM-50	3	500–3,000(130–800)	2,189(86)	540(21)	575(23)	540(21)	800(1,800)
CPM-100	5	1,000–6,000(265–1,585)	2,667(105)	600(24)	665(26)	620(24)	1,500(3,300)
CPM-200	10	2,000–12,000(530–3,170)	3,502(138)	710(28)	800(31)	675(27)	1,700(3,700)
CPM-300	15	3,000–18,000(790–4,755)	3,709(146)	840(33)	880(35)	735(29)	1,800(4,000)

**NOTES:**

1. Intermediate size pug mixers can be provided for special applications
2. Dimensions and weights are approximate and should be used for reference only



LCI Corporation is the exclusive distributor for Fuji Paudal Company, Ltd. in North America.