

Rotor Repair Service

LCI Corporation's expertise in thin- and wiped-film evaporation technology is based on over 40 years of experience in the sales, service and application of this unique equipment.

LCI is the only company in the United States with documentation and authorization to service the following thin-film and wiped-film evaporators:

- **Turba-Film®** (formerly manufactured by Cherry-Burrell, Votator, and Rodney Hunt)
- **Ajust-O-Film®** (formerly manufactured by Kontro)
- **Roto-Vak®** (formerly manufactured by Blaw Knox)
- **Luwa**
- **Buss-SMS**

Repair to Original Design Specifications

Our most successful customers know that after seven to ten years of service, the clearance between the tip of the rotor blade and the thermal section wall begins to increase due to normal wear on the rotor blades. Rotor-to-wall clearance is the key to efficient operation of thin-film equipment — **restoring the rotor to OEM specifications can significantly improve processing rates.**

LCI's standard rotor repair service includes:

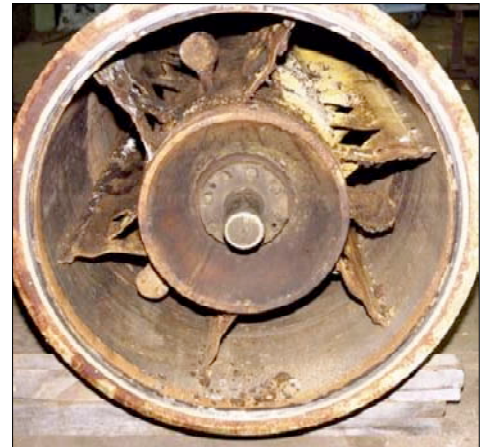
- Draining and flushing product from the interior of the rotor (if required).
- Bead-blasting the rotor to a uniform finish
- Pneumatic pressure testing the rotor to check integrity
- Repairing cracks found in the rotor core and blades
- Dye penetrant testing as needed
- Straightening the rotor (if applicable)



- Restoring rotor-to-wall clearance
- Squaring the ends of the rotor to centerline
- Pressure testing the rotor core and final sealing under vacuum
- Providing precision machined dummy shafts for balancing
- Two-plane dynamic balance of the rotor at operational speed using ISO G2.5 tolerances
- Performing a 10% over-speed check
- Preparing the rotor for safe shipment back to your plant
- Final Balance and Rotor Profile reports for your records

We provide our customers with evaluation services and **a firm price prior to commencing any repair**, allowing you complete control over the extent and cost of the repair. Our services are available on a **24-hour/day** basis.

For more information on our service and to see our troubleshooting guide, visit our web sites at www.lcicorp.com and www.turbafilm.com or call us at 1-866-632-0391.



Rotors before and after servicing by LCI.



LCI Corporation
PO Box 16348
Charlotte NC 28297
email service@lcicorp.com • www.lcicorp.com

Parts
704-398-7836
Fax 704-392-8507
After hours: 704-458-3338

Service
704-398-7888
Fax 704-392-8507
After hours: 704-458-2823