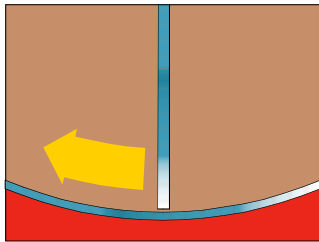


Designs for a Variety of Applications

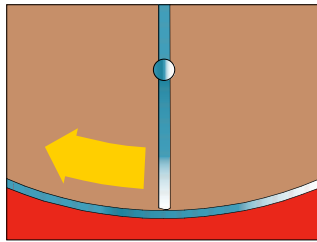
LCI offers thin-film / wiped-film evaporator designs in a wide variety of configurations.

ROTOR DESIGNS



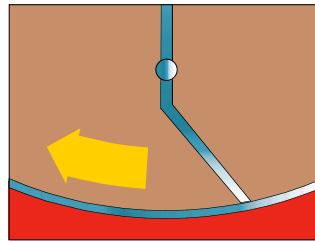
Fixed Clearance

For all horizontal designs and most vertical applications for less viscous liquids, generally less than 50,000 cps



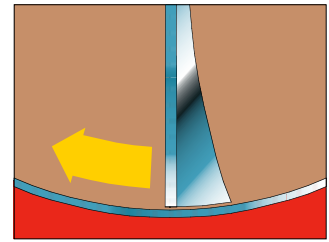
Drying

For solids-containing streams from which liquid must be evaporated or distilled



Wiped Film/Hinged Blade

For materials with very high fouling tendencies or vaporization ratios



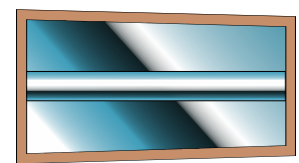
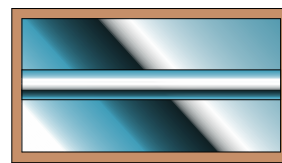
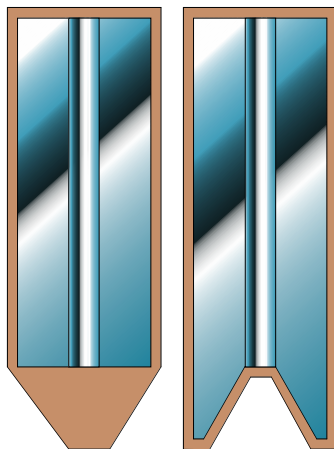
Transported Flow

This rotor design provides positive transport for viscous materials which do not flow by gravity—usually those of 50,000 cp or more

ROTOR ORIENTATION

Vertical

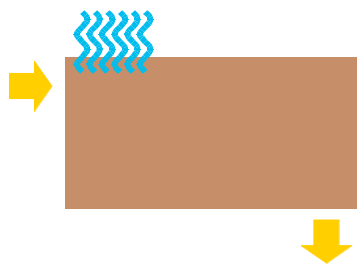
Used for most applications, the vertical configuration provides reliable, efficient processing of viscous and fouling fluids. Units are available with either an internal or external bottom bearing.



Horizontal

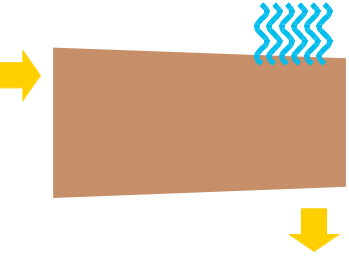
These designs are ideal for applications where longer residence times are required for mass transfer and reactions, or where headroom is limited. The tapered configuration allows adjustment of the rotor clearance to control residence time, and assures heat transfer surface wetting at low throughput rates.

VAPOR FLOW



Countercurrent

Used for most vertical applications since it maximizes both heat and mass transfer efficiencies and accommodates internal vapor/liquid entrainment separation.



Co-Current

The best choice for applications where there is heavy vapor loading, foaming, or flashing.



LCI Corporation
PO Box 16348
Charlotte NC 28297

704-394-8341
fax 704-392-8507
email info@lccorp.com
www.lccorp.com