

# Marumerizer<sup>®</sup>

## Model QJ-700TWG



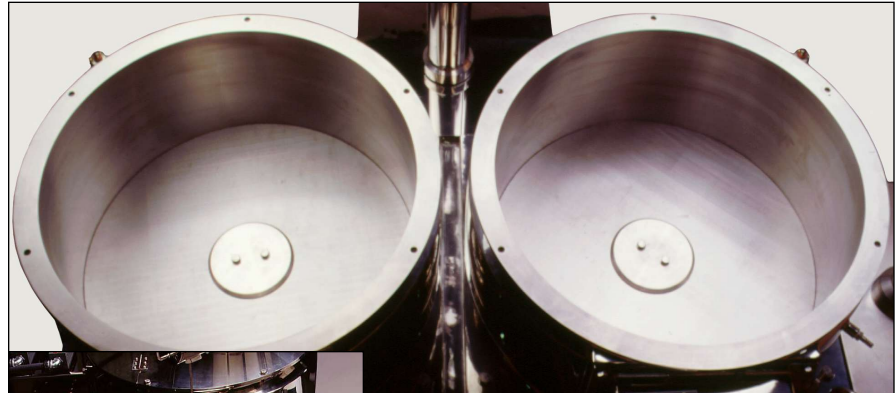
LCI's QJ-700TWG Twin Bowl Marumerizer is a large-scale production spheronizer with two separate bowls for converting wet pellets into spheres.

### Features

- Two 700 mm bowls
- Two 700 mm diameter friction plates
- 20 liters nominal batch size per bowl
- Batch operation with automatic discharge valve
- 316 SS GMP design with high polish finish
- 304 SS heating/cooling water jackets to prevent material sticking on the bowl
- Common discharge chute
- Integrated plate lifting device
- Limit switches on lids and discharge chute for safety
- 10 hp inverter duty motor in 460 VAC/3/60
- Integrated controls on articulating arm
- Compressed air under plate

### Operation

Pellets are fed to the spinning friction plate and thrown against the Marumerizer bowl forming "twisting ropes". Collision of particles with the wall, friction plate, and with other particles, results in the deformation of the pellets into spheres. The final particle shape is time and formulation dependent. Once the desired particle shape is achieved, the discharge valves are opened and the batches collected. The bowls can be run



*Above: Screens inside the twin bowls.  
Left: Systems are available with either manual or automatic integrated plate lifting devices.  
Below: Twin Bowl Marumerizer system.*



separately or simultaneously. The QJ-700 TWG can also be incorporated into a continuous system.

*LCI Corporation is the exclusive distributor for Fuji Paudal Company, Ltd. in the Americas.*

# Marumerizer Model QJ-700TWG Dimensions (shown in mm)

**Weight:** 1500kg

