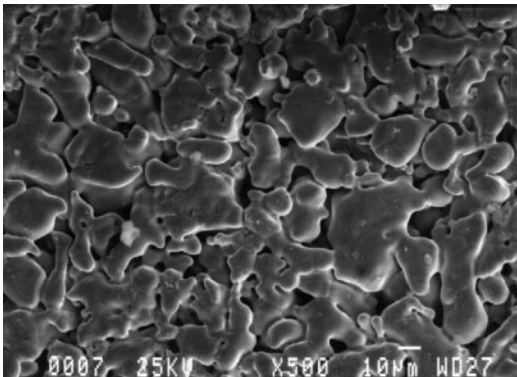
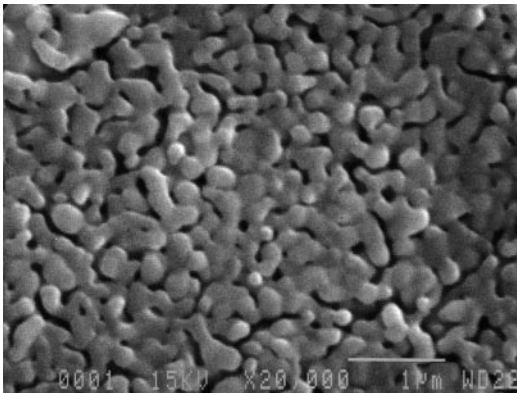


Scepter tube sheet and porous tubes



Close-up of porous stainless steel tube at 500X



Unique TiO₂ coating improves filtration performance at 20,000X

Welded Stainless Steel Microfiltration System Thrives Where Other Systems Fail.

High temperature—able to operate continuously up to 600°F.

High pressure—up to 1,000 psig and more.

High solids content—large diameter tubes handle up to 50% suspended solids by volume.

Extremely tight microfiltration—0.1 micron. Smooth titanium dioxide surface membrane prevents particle penetration and plugging.

Wide pH range—from 0 to 14.

Less frequent fouling and easier cleaning

No on-going expense and disposal problem as with earth precoat filters

Inherent mechanical strength

Scepter® filter modules from Graver Technologies are composed of porous stainless steel tubes with a permanent TiO₂ coating sintered to the tube's inner surface. Modules are of all-welded, no-tube-seal construction. Scepter tubes are unaffected by mechanical shock and can have a useful lifetime of 10 years or longer.

Modules are normally operated in crossflow configuration. Customized modules can be made or tubes provided to retrofit existing systems.

If you have a tough application, this could be the solution. Call LCI to learn more.



LCI Corporation
PO Box 16348, Charlotte, NC 28297
704-394-8341 Fax: 704-392-8507
Email: info@lccorp.com
www.lccorp.com